



WINNEBAGO COUNTY MASTER GARDENER May 2010 - NEWSLETTER

(click here to go directly to website) www.winnebagomastergardeners.org 920-232-1986

PRESIDENT'S MAY LETTER

Spring is finally here with warm, sunny, longer days. It's the perfect time to work in our gardens and help with Master Gardener Projects.

My husband, Joe, and I (Mary) went to San Francisco over Easter to visit our son. One day, we traveled north of the city to Armstrong Redwoods State Natural Reserve. As we drove there, I was amazed to see 3-4 foot Calla Lilies and deep blue Lupines growing along the side of the road much as we would see "Ditch Lilies" growing here in Wisconsin. We hiked in the Reserve through spectacular Redwoods and Douglas Fir. The forest floor was blanketed in a sea of pink and white blossoms of Western Trillium and Redwood Sorrel. Along the trails we saw Western Blue-Flag Iris, Snow Drops and Forget-Me-Nots, along with many other native plants I couldn't identify. We were fortunate to see so many spring flowers in bloom.

We have a busy May ahead of us with many opportunities to work on projects. Remember to track and record your hours. The 2010 Hours Report form was in April's Newsletter and is posted on the Website. Be sure to look for WCMGA on Facebook.

Happy Gardening!
Mary & Kathy

WHERE IS IT?

Save the Dates – pg2
Birthdays – pg 2
Plant of the Month – pg 2
MG of the Month – pg 2
Minutes – pg 4
Hours Form – pg 9
What Am I? – pg 6 /ans. Pg 7
Calanders – pg 13 & 14
Nick's Letter - pg 10

[All Forms are available on our Website](#)

[No May Business Meeting We will have a Garden Walk instead details on Page 7](#)

NICK'S NOTE:

April 19, 2010 AGRICULTURE NEWS RELEASE

Please Tell Your Friends Community Garden Spaces Available in Oshkosh!

The city of Oshkosh now has two community gardens, the Sherman Road Community Garden between County Highway A and Lake Winnebago and the new Riverside Community Garden on the north end of the Riverside Cemetery. Community gardens are an inexpensive, convenient way for people to experience gardening. In particular, this is a great fit for residential renters or homeowners with inadequate yard space. Garden plots are available for \$15 to \$25 depending on size and location. For more information on community gardens call UW-Extension at (920) 232-1971. More information can be found online at <http://winnebago.uwex.edu/hort/ConsumerHort.html>.

Contact: Nick Schneider, 920-232-1971,
nick.schneider@ces.uwex.edu

Nick Schneider
Agriculture Agent
Cooperative Extension

Nick's letter is on page 10.



It is time again for the annual MG picnic in the gazebo area at Park View Health Center. MG's will furnish the meat and drinks. All attending are asked to bring a dish to pass, chairs if needed and plants to put into the plant swap. Please contact Mary Wiedenmeier 426-0991 or email at mpwied@yahoo.com if you will be attending. Let her know the number of people by June 1.

Park View Health Center June 8th 6:00 PM

SAVE THE DATES

MAY 15, 2010
Heirloom Plant Sale

JUNE 8, 2010
Master Gardener Picnic – [sign up now](#)

JUNE 15 – 19, 2010
Master Food Preserver Training

JUNE 18 – 20, 2010
Midwest Renewal Energy Association

JUNE 21, 2010
Flower Arranging PV 1:30 p.m.

Watch the newsletter each month for more info on these events and more.

HAPPY BIRTHDAY IN MAY



Mary Wiedenmeier,
Sue Tappy, David Thurow,
Lillian Hansche, Becky Gratz and
Jane Cross

Plant of the Month: May Flower

The fragrant, delicate mayflower (*Epigaea regens*) has been on the **endangered** list since 1925. Also known as ground laurel or trailing arbutus,

mayflowers prefer sandy or rocky soil, under or near evergreens. Massachusetts adopted the



mayflower as the official flower of the Commonwealth in 1918.

The Mayflower should not be confused with Arbutus, a related genus (including the Madrone species) also of the heath family. Mayflower is a small evergreen creeping shrub, found in sandy soil in many parts of North America, in the shade of pines. **Mayflower has long been in cultivation here as an ornamental.**

Mayflowers are Pale pink or white. Each Mayflower has a small tube ending in 5 flared lobes. The Mayflower lobes are about 1/2 inch long, growing in small terminal and upper axillary clusters. The Mayflower blooms are waxy, exquisitely [sweet-scented](#) flowers intensifying with age. The small, crowded clusters of Mayflower are borne in the axils of the leaves and at the tips of the stems. Mayflower blooms are often hidden from view by the leaves, especially early in the [season](#).

The tubular corolla of the Mayflower is up to a half-inch or so long and nearly as wide at the mouth, where it expands into the 5 spreading lobes. The inside of the tube is very hairy. The Mayflower species is dioecious, having the sexes segregated on different plants. Even though they look more or less alike, the Mayflower blooms of some plants are functionally staminate (male) and of others, functionally pistillate (female). The Mayflower produces nectar and is commonly visited by early queen bumblebees of several species.

Facts About Mayflowers

- Mayflower is a **belly** plant, i.e., one must lie on one's stomach to catch a legitimate moment of putting eye and nose to the beauty and perfume.
- The scarcely shrubby Mayflower is a tough, slightly woody, more or less rough-hairy plant with light brown, creeping stems and alternate, olive-green leaves.
- The scientific name, *Epigaea repens*, coined by Linnaeus in 1753 from Greek and Latin, literally means **creeping (or running) on the earth**.
- Mayflower typically grows in sandy or rocky, acid soils in woods and clearings, often on hillsides and banks, including road banks, especially under oaks and pines or hemlocks with such other ericads as mountain-laurel.
- Other common names of Mayflower are: *Gravel plant, shadflower, ground laurel, mountain pink, winter pink*.

- Mayflower plant leaves are alternate, evergreen, leathery, Ovate or oblong, with entire margin and a rounded or heart-shaped base.
- The Mayflower has a small **fleshy fruit**, 5-chambered, many-seeded capsule that splits open at maturity. Ants then disperse the seeds.
- Mayflower blooms from **March to May**.
- The Mayflower leaves contain ericoline and ursolic acid along with arbutin, which is a urinary antiseptic.
- It has been the State Flower of Massachusetts since May 1, 1918 and the Provincial flower of Nova Scotia since 1901.

Unfortunately, since 1925 Mayflowers have been on the endangered list.

FESTIVAL OF SPRING

Saturday, May 22, 2010

9:00 am – 4:00 pm

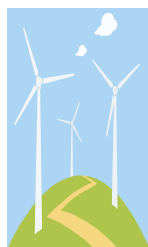
(8:00 am early admittance for Members)

Join us for the Paine's annual Festival of Spring on Saturday, May 22, 2010! Festival of Spring is a free outdoor festival featuring the annual Spring Plant Sale and more than 200 vendors of original art, fine crafts, plants and garden supplies. Visit the Corner Flea Market located at the corner of Elmwood Avenue and Congress Street, and also enjoy great food and entertainment throughout the day. Tour the Paine's spring garden showcase featuring more than 10,000 blooming wildflowers, tulips, daffodils and flowering trees.

And, this event is a great way for Master Gardeners to volunteer and share their knowledge with eager community members. For more information or to volunteer please contact the Paine Volunteer Coordinator at (920) 235-6903 ext. 40.

RENEWABLE ENERGY FAIR

Midwest Renewable Energy Association is having a 3 day fair June 18 – 20, 2010. It will be held in Custer, WI, located Approx. 6 – 8 miles east of Stevens Point just north of Hwy 10. For more information, go to www.the-mrea.org. You will find schedules for the workshops, lectures and other info. If this is of interest to you please come. All are welcome.



Rhubarb needs dividing every five years

By Lawanda Jungwirth

Little red buds are appearing in the rhubarb patch. It will be another month or more until it is ready for harvest, but now is the time to divide it if you haven't done so for several years.



Dividing rhubarb keeps it producing well. If the stalks are getting spindly, it's time to divide.

Use a spade to dig all around the crown and then lift it from the soil. Break the crown into pieces, making sure each piece has one or two buds and a root. If you cannot identify a bud, just divide it into several good-sized clumps. Replant the divisions so that the buds are just covered with soil, about the same depth it was before you dug it up.

While the rhubarb is out of the ground, take the opportunity to remove weeds and add some rotted manure or other organic fertilizer to the soil.

Do not harvest any rhubarb the first year after dividing. The plants need this year to re-establish themselves. Harvest lightly the second year, and after the third year, harvest as much as you want, never taking more than half the stalks at a time. Fertilize after harvest is completed each year.

To avoid the waiting period, use a sharp spade to slice down the middle of the crown while it is still in the ground and lift just half of the plant. Continue to harvest from the original plant while the new divisions are establishing themselves.

All that said, if your rhubarb hasn't been divided for many years and is prolifically producing good thick stalks, don't bother dividing it until you have to!

Rhubarb will grow in just about any kind of soil, but does best in loose, well-drained, fertile soil.

To harvest rhubarb, select firm, crisp stalks and gently tug and twist them from the ground. Cut off the leaf. Rhubarb leaves contain oxalic acid and are toxic, so wash your hands after harvesting.

Store fresh rhubarb stalks, unwashed, in the refrigerator up to two weeks. Rhubarb can be rinsed, cut into inch-long pieces, and frozen in freezer bags.

Always remove the thick flower stalks that shoot up from the center of the plant as soon as you see them. They take energy from the plant that is put to better use in growing the stalks you will harvest. Some rhubarb cultivars are more likely to produce

flower stalks than others, and some produce them some years and not others, depending on soil conditions and weather.

If you are planting rhubarb for the first time, there are several cultivars to choose from. If you are buying crowns to plant rather than getting divisions from a friend, read the descriptions to help you decide which one to choose. Some cultivars are sweeter than others, and colors range from green to pink to red.

Flower Arranging – Thanks & Dates

Thanks to Garden Gate and donations from others, we were able to make many wonderful bouquets for the residents in February, March, and in April. They turned out so lovely!! We will be making fresh flower bouquets on May 24 at 1:30 in the Great Room.

The dates for bouquet making this summer on Mondays at 1:30 are:

June 21, &19, August 2, 16, 30 and Sept.13, & 27

The Park View staff has mentioned what a wonderful group of people (from the Master Gardeners) we are. The residents are excited and look forward to this activity. Special thanks to all who make this so meaningful!!

MG of the Month:

Sorry, but we have run out of members' bios. If you would like us to renew the Member of the month, please send in a bio if you have not already done so. Send it to Linda Tobey 1800 Midway Rd, Menasha, WI 54052 or email to linda@americanpresstech.com Thank You

VOLUNTEER OPPORTUNITY PLEASE HELP PULL GARLIC MUSTARD!

Come help pull garlic mustard along the Wiouwash Trail on Saturday, May 1 and May 8 (if necessary) from 8:00 a.m. – 12:00 noon.

Meet at Brooks Road parking area.

From Oshkosh, take Hwy. 45 north to the Ryf Road exit. Turn right on Cty. T at the top of the exit

ramp. Go just over 1½ miles to Brooks Road. Turn left and go about 1 mile to the trail.

Or from Oshkosh, take Hwy. 76 (Jackson St.) Go under Hwy. 41 and turn left at the frontage road - Green Valley Road. Turn right on Brooks Rd. just before Stuart's Landscaping. Go 3 miles to the trail.

From the Fox Valley, take Cty. II, Larsen Rd, Oakridge Rd., Cty JJ or Breezewood Rd. west to Hwy. 76. Turn left and go south to Green Valley Road (Hwy. 41 frontage road). Turn right on Green Valley and then right again on Brooks Rd. just before Stuart's Landscaping. Go 3 miles to the trail.

Your help is welcome even if you can come for only an hour or two!

You do not have to get there at 8:00 a.m. Come anytime!



Bring gloves, kneeling cushion or knee pads and a dandelion digger. A five gallon bucket is handy also. Garlic mustard pulls easily but a dandelion digger makes it even easier and helps ensure that the roots don't break off.

This is a rather pleasant pastime on a nice spring day. No mosquitoes yet!

Call Lawanda Jungwirth at 836-2878 or e-mail ljungwirth@new.rr.com for more information

- or -

JUST SHOW UP!

MASTER GARDENER BUSINESS MEETING

April 13, 2010

COUGHLIN CENTER, 6:15 PM

Members Present:

Ruth Freye, Stanley Meyer, Synda Jones, Patty Schmitz, Sue Egner, Linda Tobey, Ken Hawk, Pat Behm, Janet Priebe, Marge Bolding, Lawanda Jungwirth, Diana Dougherty, Bob Potter, Jane Kuhn, Linda Petek, Alice Graf, Mary Wiedenmeier, Cindy Meszaros, , John Procknow, Dorothy Gayhart-Kunz, Ivan Placko, Marge Menacher, Dara Sitter, Linda Baeten, Karen Wedde, Diane Iott, Kathy Daniels, Betty Kuen, Linda Loker, Judy Harms, Al Harms, Vicki Christman, Sue Bohn, Debbie Quandt, Sandra Gollhofer, Mary Rebman, Shari Frost, Janet Clark.

Announcements:

The scheduled Facebook presentation was not given tonight.

Jason Tetzlaff of Stuarts Landscaping gave a presentation on "New & Unknown Annuals & Tropicals for 2010".

The Business Meeting was called to order at 7:00 pm by Co-President Mary Weidenmeier.

Treasurer's Report – Alice Graf

The balance as of 3/01/2010 is:

Cash On Hand	\$ 100.00
Checking	\$ 12,456.49
CD Renewal 2/22/10	\$ 5,081.29
Total all Accounts 3/31/10	\$ 17,637.78

A handout was available with the details.

Secretary's Report:

There was a correction to the March Minutes as printed in the April Newsletter under New Business – Facebook Page. It should read: Staci Voight (not White) will be the administrator.

OLD BUSINESS –

Home and Garden Show – Cindy Meszaros: The MG Booth was a success, many questions were asked. They sold 18 bags of worm castings and 12 cook books. Many people attended the Bee Keeping seminar. There was a lot of interest in vegetable gardening, and some signed up for MG classes.

NEW BUSINESS –

Horticulture Scholarship – Marge Menacher: Matthew Owens from the Oshkosh area is the new scholarship recipient. He was displaced from Curwood. He has outstanding grades, good attendance, is very dependable and willing to help on projects. Marge will be present the award on May 12th at the Fox Valley Technical College. Anyone who wishes to come should contact Marge.

Taking Root Donation – Linda Baeten: Linda explained the "Taking Root Fund" aimed at beautifying Oshkosh. The idea came about from a Visioning meeting held by Oshkosh Community residents. They found there was a desire to make Oshkosh a better place to live and instill community pride by improving the surroundings with more trees, wider terraces and unified streetscapes. It has expanded to include various flower beds throughout the city as well. Donations are being accepted through a special project fund of the Oshkosh Area Community Foundation, called "Taking Root". Linda asked the MG Board if they were willing to give a donation to this cause. After

some discussion, an amount of \$1,500 was approved by the Board, however, due to the unprecedented amount of money being donated, it is brought to the membership tonight to decide if we should proceed.

After much discussion, and by show of hands, a majority of members felt we should proceed with the \$1,500 donation. Linda will check into how the MGs would be recognized for the donation. Another component to "Taking Root" would be the opportunity to help plant flower beds and have the hours count for Master Gardener volunteer hours. Linda Baeten is willing to lead this project. She has talked with City Forester, Bill Sturm, who is willing to coordinate with us. Linda is willing to be lead on this project. A sign-up sheet was passed around for those who are interested in helping plant. No design or input for plant material is required, just planting the beds. No mention was made of maintenance, but Linda will check into it. It was suggested that this be a Sanctioned Project and would need approval as such by the Board. Linda will send in a project form for approval. Planting would begin mid or late May. Linda Tobey mentioned hours for this project should be listed under "Any Other Projects" on the Hours Report.

COMMITTEE REPORTS

Education – Roy Anne

Winter Escape/Summer Dreams - Roy Anne gave a report based on the survey results. Overall the event was very successful with favorable comments. Only a few negative comments were made. There were some suggestions for future speakers.

Future Events:

- Amish Buying Trip, April 24th – 2 full buses.
- Wildflower Walk, May 1st – Waushara County. Karen Wedde is working on the details
- Garlic Mustard Pull, May 1 & 8 – Wiouwash Trial. See Lawanda for details.
- Paine Festival of Spring, May 22nd. Ken Hawk passed around a sign-up sheet.
- Ball Horticultural Gardens Trip, August 6th. Rou Anne Moulton for details.

Other Committee Reports –

- Ruth Freye had a request for the Mosaic Community Gardens. She is planning a garden that requires ground cover plantings. If anyone from the membership could donate plants they would be greatly appreciated. Please bring them to the next

Business Meeting. She is specifically looking for Vinca, Ajuga, Lysimachia (Money Wort), and Dragon's Blood Seedum.

- Dorothy Gayhart-Kunz still has 3 spots open at the Farmer's Market if anyone is interested.
- Nick Schneider had a request for a Master Gardener to attend an event at Roosevelt School on May 20th.
- Plant Health Advisor training will be held April 15th at the Coughlin Building. We are already receiving calls. Those who want to participate in being a PHA will be able to answer calls from home.

Annual Picnic – June 8th

The picnic will be held at the Park View Gazebo. There will be a plant swap. Please label any plants you bring. Bring a dish to pass. A sign-up sheet was available.

Other New Business

A question came up whether members are able to e-mail the entire membership when they have a need to do so, or whether they would need to go through Kathy or Mary. It is OK to do so directly, however, Kathy keeps the e-mail list updated so no one is missed.

Door Prizes were handed out.

Thanks to Miles Kimball and Synda Jones for door prizes.

Meeting adjourned 7:40 pm

Next Board Meeting: May 4, 6:00 pm at the Coughlin Center. (All members are welcome to sit in at Board meetings.)

Next Business Meeting: May 11, 6:15 pm at the Coughlin Center.

Respectfully submitted, Linda Baeten, Secretary

BOARD MEETING MINUTES CAN BE FOUND ON OUR WEBSITE

What Am I?

I am a wildflower (perennial, zones 3-8) that can be seen in early spring covering the Wisconsin woodland floor with white (turning pink with age) blossoms. I get my name from the Latin word for three due to my three ruffled petals and three broad, oval-shaped leaves which are on an 8-10 inch stem. My leaves have indented veins and ride high on the stem, just below my single flower. Enjoy my flowers in the garden rather than picking. Due to my short stems, leaves would have to be picked with the flower and the leaves are needed to provide the plant with nourishment for the following year.

In the fall, each flower produces a blue-black, berry-like fruit. I prefer to be grown in full to part shade and thrive in a moist, humus rich soil of neutral pH. My habit of growth makes me a useful ground cover in the shade garden – I spread on creeping underground stems, or rhizomes, sending up dense clumps of foliage. Each rhizome may send up as many as eight flower-bearing stems. Plant me in the fall, setting rhizomes 2 to 4 inches deep with the eyes facing upward and spacing plants 5 to 8 inches apart. Protect me from the cold and enrich the soil by adding a mulch of leaf mold or compost each winter.

Fond du Lac's BUYING TRIP

Milaeger's Gardens, Mitchell Domes, and Growing Power, Inc.

Sponsored by
Fond du Lac County Master Gardeners
June 2, 2010
7:30 a.m. – 6:00 p.m.

Enjoy shopping at Milaeger's greenhouses filled with exciting colorful plants. The gift shop has a large selection of garden accessories, clothing, Christmas ornaments and unusual gifts.

In the Mitchell Domes, you can experience a desert oasis, jungle and special theme floral gardens all in one building.

Growing Power Inc. headquarters is where people learn sustainable practices to grow, process, market, and distribute food. The prototype community food center features hydroponic systems, aquaponics, worm depository, apiary with 5 beehives, anerobic digester that produces energy

from the farm wastes; and a small retail store with farm produce. This is sure to be very educational.

Cost: \$40 Per person

Includes motor transportation, refreshments, and admission fees. You may purchase lunch at the Java Cafe at Milaegers or you may bring your lunch. Payment must be made by May 5, 2010 to hold your reservation.

Contact Shirley Frieler at (920)922-9860 or e-mail sfrieler@milwpc.com or Sharon Rasmussen at (920)921-6473 or e-mail patches@dotnet.com. There are no refunds but you may send someone in your place. Make your check payable to Fond du Lac County Master Gardeners. Mail to Shirley Frieler, 428 Wilson Avenue, Fond du Lac, WI 54935.

NAME_____

ADDRESS_____

E-MAIL_____

PHONE_____

NUMBER ATTENDING_____ @\$40 ea.

ENCLOSED_ \$_____

Back Home Magazine

By Lawanda Jungwirth

One of the first things I posted on the WCMG Facebook page was a recommendation for a magazine I discovered at the library called "Back Home." While not a gardening magazine, it does have many gardening articles. I checked out several back issues. Here are a few things I learned.

- You can grow potatoes in five gallon plastic buckets. Drill 10-12 holes in the bottom for drainage. Place a 3-inch layer of small rocks in the bottom. Fill the bucket $\frac{3}{4}$ full with a topsoil and sand mixture. Place seed potatoes on the soil and cover lightly. As the plant grows, continue to fill the bucket with soil. Harvest potatoes when the tops die back.
- <http://www.wildflower.org> is the website of the Lady Bird Johnson Wildflower Center established by the former first lady in 1982. The website has a database of 7,200 native plant species, and recommends 178 species specific to Wisconsin. Say you are looking for a new shrub for your front yard. You can narrow

your search to Wisconsin shrubs, then indicate if the plant will be in sun or shade, the soil moisture, when you'd like it to bloom and in what color, and the website will return a recommendation for you. Or say you want a perennial plant that will grow in dry soil in part shade, with pink blooms in July and August. There are 14 results for this one!

- Biochar is organic matter that is burned slowly, with a restricted flow of oxygen. The fire is stopped when the material reaches the charcoal stage. When added to the garden, plant growth is enhanced, fertilizer needs are lessened, leaching of excess fertilizer is reduced, microbes in soil increase, water is better managed and soil acidity is reduced. Biochar is not yet readily available at the retail level, but I think we will see it in the future. If local ordinances allow, you can make biochar yourself. Pile woody debris in a shallow pit in a garden bed. Burn the brush until the smoke thins, then dampen the fire by covering it with an inch of soil. Let it smolder until the brush is charred and then put the fire out with water.

Answer: What Am I?



I am a trillium. Family: liliaceae (lily family). Genus: trillium. Species: trillium grandiflorum. Common name: trillium. Some native peoples used trillium roots and rootstocks as medicine, and the young leaves are said to make an excellent salad and cooked greens, but it would be a shame to kill such a beautiful plant.

Resources: USDA Plants Database and associated links.

SANCTIONED CORE PROJECTS

Community Education	
Marge Menacher	223-3467
Community Gardens	
Ruth Freye	734-5978
Education and Control of Invasive Species	
Lawanda Jungwirth	836-2878
Audrey Ruedinger	231-5745
Farmers Market	
Dorothy Gayhart Kunz	233-8468
Janet Priebe	233-1898
Humane Society Memorial Garden	
Dara Sitter	582-4405
Lincoln School	
Karen Wedde	231-9696
Mary Haave	231-2542
Octagon House	
Jerry Robak	722-3311
Paine Gardens	
Bob Potter	233-3349
Park View Cutting Garden	
Bill Weber	231-2936
Park View Vegetable Garden	
Judy & Al Harms	688-5523
Park View Prairie Garden	
Ken Hawk	426-1691
Park View Flower Arranging	
Pat Behm	410-3290
Plant Health Advisors @ UWEX	
Barbara Kuhn	426-2920
Rushford Town hall	
Audrey Ruedinger	231-5745
Carol Dorsch	589-5936
Shared Harvest	
Ken Friedman	235-6766
Fox Cities Habitat for Humanity	
David Leonard	379-5860
Washington & Webster Schools	
Marge Menacher	223-3467

OFFICERS / BOARD MEMBERS

Mary Wiedenmeier (PRES)	426-0991
Kathy Daniels (PRES)	233-0410
Ivan Placko (VP)	721-9394
Linda Baeten (SEC)	232-1224
Alice Graf (TRES)	203-8252

BOARD MEMBERS

Susan Bohn	685-0427
Marge Menacher	233-3467
Stanley Meyer	725-6486
Ken Hawk	426-1691
Audrey Ruedinger	231-5745
Roy Anne Moulton	886-1283
Bob Potter	233-3349

COMMITTEES

Education and Trips	
Roy Anne Moulton	886-1283
Education – Meetings	
Audrey Ruedinger	231-5745
Event Planning	
Kathy Daniels	233-0410
Mary Wiedenmeier	426-0991
Historian	
Dawn Kent	410-8866
Membership	
Dawn Kent	410-8866
Newsletter	
Linda Tobey	734-2264
Jean Reed	729-9012
Lawanda Jungwirth	836-2878
Jane Kuhn	231-3993
Refreshment Committee	
Linda Loker	426-1435
State Rep	
Bob Kosanke	231-1873
SOP & Bylaw Committee	
Stan Meyer	725-6486
Sunshine	
Liz Ginke	722-8140
Hours	
Bruce Abraham	231-3747
Linda Tobey	734-2264
Home & Garden Shows	
Joni Pagel	233-6619
Cindy Meszaros	233-3550
Website, Computer and Projector	
Jean Reed	729-9012

May 4 - Board Meeting – 6:00PM
May 11 - Business Meeting – 6:15PM

OUR MISSION STATEMENT:

Our purpose is to provide horticultural education, community service & environmental stewardship for our Community in affiliation with the University of Wisconsin Extension Program.



NAME :

WCMG 2010 HOURS REPORT

Must be received by September 1, 2010

ADDRESS :

PHONE :

	ONLY FILL IN APPROPRIATE BLANKS WITH INFORMATION												DO NOT USED GRAYED AREA				
	AUG	SEPT	OCT	NOV	DEC	JAN	FEB	MAR	APR	MAY	JUN	JUL	AUG	SERVICES	COMMUNITY EDU.	YOUTH	TOTALS
2009 - 2010														SERVICES			
ATTEND MEETINGS																	
OFFICER / BOARD																	
COMMUNITY GARDEN																	
EDU/CONTROL INVASIVES																	
LINCOLN SCHOOL																	
OCTAGON HOUSE																	
OSHKOSH HUMANE SOCIETY																	
PAINE GARDENS																	
PARK VIEW PROJECTS																	
PLANT HEALTH ADVISOR																	
RUSHFORD																	
SHARED HARVEST																	
SET UP CLASS																	
APPROVED INDIVIDUAL																	
ANY OTHER PROJECTS																	
COMMITTEES																	
TRIPS / HOURS																	
SUNSHINE COMMITTEE																	
REFRESHMENTS																	
SOCIALS																	
HISTORIAN/STATE REP																	
ANY OTHER SERVICE																	
COMMUNITY EDU.																	
EDU. COMMITTEE																	
FARMERS MARKET																	
FOX CITIES HAB/HUMANITY																	
WORKED SHOWS																	
GAVE PRESENTATION																	
NEWSLETTER																	
ANY OTHER COMM. ED.																	
YOUTH																	
WASHINGTON/WEBSTER																	
ANY OTHER WITH YOUTH																	
CONTINUING EDU.	CONTINUING EDUCATION HOURS DO NOT GET ADDED WITH TOTAL HOURS																
CLASSES																	
GUIDED GARDEN TOUR																	
WORK SHOP/SEMINARS																	
HORT. TV / VIDEOS																	
	TOTAL OF VOLUNTEER HOURS ONLY																
	TOTAL CONTINUING EDUCATION ONLY																

EMAIL: wiscorpio53@yahoo.com
(Please include in e-mail Subject line: "WCMG 2010 Hours Form")

or Mail To: Bruce Abraham
1911 Army Jo Dr
Oshkosh, WI 54904-8841



Winnebago County

University of Wisconsin-Extension
625 E. County Road Y, Suite 600
Oshkosh, WI 54901-8131
920-232-1970
920-424-1277(fax)
TDD Phone: 711 for Wisconsin Relay

Cooperative Extension

Agriculture	(920) 232-1971
Community Development	(920) 232-1972
Family Living	(920) 232-1973
4-H Youth Development	(920) 232-1974

May 2010

Dear Master Gardener Volunteers:

Periodically, UW-Extension takes steps to assure that our partners know and understand our policy of nondiscrimination. This letter is to remind or notify you that the University of Wisconsin-Extension does not discriminate in the treatment of individuals, in the admission or access to its programs and activities, in the provision of services, or in employment.

Further, UW-Extension will not participate with organizations or in activities which discriminate on the basis of any of the legally prohibited categories of discrimination. Categories of prohibited discrimination include race, color, gender/sex, creed, disability, religion, national origin, ancestry, age, sexual orientation, pregnancy, marital or parental status, arrest or conviction record, or membership in the national guard, state defense force or any other reserve component of the military service.

Consistent with the Americans With Disabilities Act, persons who need materials in alternative format or other accommodations must write or call the UW-Extension contact person for the specific program or call the main telephone number of the Winnebago County Extension Office, 920-232-1970 at least ten (10) working days prior to the event.

Individuals who need TTY access may contact the Winnebago County Extension Office by calling the Wisconsin Telecommunications Relay System at 711.

On behalf of Winnebago County Extension and the University of Wisconsin-Extension, we want to thank you for collaborating with our faculty and staff in their many educational endeavors. We appreciate your support and working relationships as we provide educational programs designed to empower the diverse citizens of Winnebago County.

Sincerely,

Nick Schneider
Winnebago County Agriculture Agent
UW-Extension Winnebago County

Calling all Gardeners!!!



Heirloom Plant Sale
May 15, 2010
8 am – 3 pm

Event attendees will find a wide variety of plants to buy for their own garden at the Gardens annual Heirloom Plant Sale. Choose from 49 varieties of tomatoes, 20 varieties of peppers - plus eggplants, cucumbers and beets along with many other vegetables. More than 20 varieties of flowers will also be available.

Admission is free

All plants are \$2.50

Plus – learn more about Heirloom Plants by attending one (or more) of the following classes that will be held in the Library of the Scheig Learning Center!

Best Plants for 2010
9:00 am – 10:00 am
Instructor: Kathy Baum

What is an Heirloom Plant?
10:15 am – 11:15 am
Instructor: Leo Sances, Prospera Farms

Herb of the Year
11:30 am – 12:30 pm
Instructor: Jackie Johnson

Friends of the Gardens: Free; Non-Members: \$5. Classes are also free with the purchase of a Gardens' membership! Pre-registration is suggested as class size is limited.

Thank You to our 2010 Heirloom Plant Growers: Carol Catlin; Reynebeau Floral, Inc.; Riverside Florist and Greenhouse; and The Plant Station Greenhouse, Inc.

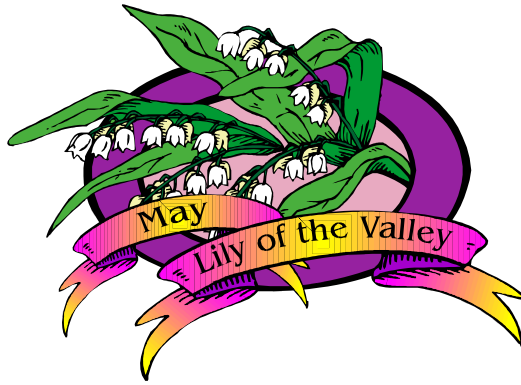
Special Pre-Sale for Friends of the Gardens & Event Volunteers
May 14, 2010, 4 – 7 pm



**VOLUNTEERS
BUILD
A BETTER WORLD**

*You are cordially invited to attend
Park View Health Center's
VOLUNTEER LUNCHEON
Wednesday, May 12th
Any time between 11:00am & 1:00pm
In the Great Room*



*Please RSVP by April 23rd
Paul Behnke
920-237-6931*



2010

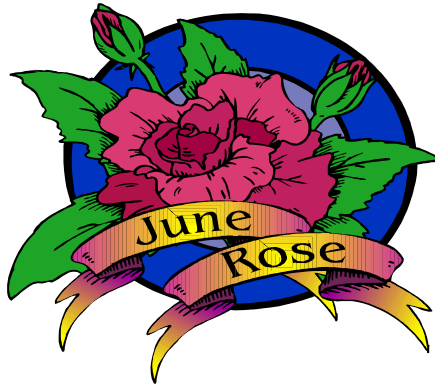
Touch the earth, love the earth, and honor the earth.

Henry Peston

SUN	MON	TUE	WED	THUR	FRI	SAT
						1 May Day 
2	3	4 Board Meeting	5	6	7	8
9 Mother's Day	10	11 Business Meeting W/Facebook talk	12 Park View Volunteer Luncheon 11 - 1	13	14	15 Heirloom Plant Sale
16	17	18	19	20	21	22 Paine Festival of Spring 
23 /	24 Flower Arranging /	25	26	27	28	29
30	31 Memorial Day					

An EEO/Affirmative Action employer, University of Wisconsin Extension provides equal opportunities in employment and programming including Title IX requirements. Please make request for reasonable accommodations to ensure equal access to educational programs as early as possible preceding the scheduled program, service or activity.





2010

Flowers are our greatest silent Friends

Jim G. Brown

SUN	MON	TUE	WED	THUR	FRI	SAT
		1 BOARD MEETING	2	3	4	5
6	7	8 PICNIC 	9	10	11	12
13	14	15 Master Food Preserver Training 15-19	16	17	18 Midwest Renewal Energy 18-20	19
20	21 Flower Arranging 	22	23	24	25	26
27	28	29	30			

An EEO/Affirmative Action employer, University of Wisconsin Extension provides equal opportunities in employment and programming including Title IX requirements. Please make request for reasonable accommodations to ensure equal access to educational programs as early as possible preceding the scheduled program, service or activity.

