



WINNEBAGO COUNTY MASTER GARDENER JUNE 2010 - NEWSLETTER

(click here to go directly to website) www.winnebagomastergardeners.org 920-232-1986

PRESIDENT'S MAY LETTER

June is a month of fun and hard work. The fun is our picnic Tuesday, June 8th, 6pm at the Gazebo at Park View Health Center. Members and their guests are invited. Please bring a dish to pass, lawn chairs and a plant for the plant swap if you want to participate. Please label your plant. The MG Association will provide dinnerware, broiled chicken breasts and hamburgers. RSVP to either Mary or myself by June 2.

Hope everyone has had time to dig in the dirt and plant your gardens. Now we need warm seasonable weather to make everything grow.

We do have garden walks planned for the upcoming months. Hope you all can attend. This is a time when our members can show off their hard work. It also can give us all ideas for our own gardens.

Tuesday, September 7, 2010 will start our fall MG classes. This year they are changing to Tuesdays. For more information contact the UW-Extension. Our next business meeting will be Tuesday, September 14, 5:30pm, before the start of the fall class. Read your upcoming newsletter for more information.

Happy Gardening,
Kathy & Mary

WHERE IS IT?

Save the Dates – pg2
Birthdays – pg 2
Plant of the Month – pg 2
Minutes – pg 5
Hours Form – pg 9
What Am I? – pg 3 /ans. Pg 5

[All Forms are available on our Website](#)

NICK'S NOTE:

**Congratulations Lawanda Jungwirth,
Audrey Ruedinger and the
Invasive Crusaders!**

The efforts of Lawanda and Audrey as co-chairs for the Education and Control of Invasive Species have brought recognition from the Wisconsin Council on Invasive Species selecting them as 2010 Invasive Crusaders. All of the volunteers who have served on Invasive Species projects over the years deserve applause as well.

Invasive Crusader Awards are for outstanding voluntary or professional efforts in the battle against invasive species. The Council recognizes a small number of people every year based on their commitment to stopping the spread of invasives through education and/or on-the-ground work.

Lawanda's primary focus of invasive plant control is at the Wiouwash Trail, a popular bicycle and walking route which begins in Oshkosh heading northward to Outagamie and Waupaca Counties where the mission is to eradicate garlic mustard. Audrey focuses on reducing invasive populations of buckthorn at the Waukau Nature Preserve and through education of other gardeners.

They have been invited to the Governor's Conference Room at the state capital for a special recognition ceremony on June 2nd. Thank you for all the hard work you do on this project.

It's time to start spreading the word that the next Basic Master Gardener class is coming up again. It will be Tuesday evenings from 6:00 to 9:00 pm between Labor Day and Thanksgiving. Please tell your friends.

It's been approximately 15 years since there was a Winnebago county June Dairy Breakfast. On June 20th, the dairy breakfast returns. It's from 9:00 am to 1:00 pm at the Nekimi Town Hall and Pavilion adjacent to the Planeview Travel Plaza at the exit of Hwy 41 and 26. It is \$7 per person, children 8 and under free. The list of activities is too long to list. It will be a great time for the whole family.

Best Wishes
Nick

PICNIC

It is time again for the annual MG picnic in the gazebo area at Park View Health Center. MG's will furnish the meat and drinks. All attending are asked to bring a dish to pass, chairs if needed and plants to put into the plant swap. Please contact Mary Wiedenmeier 426-0991 or email at mpwied@yahoo.com if you will be attending. Let her know the number of people by June 1.

Park View Health Center June 8th 6:00 PM

HAPPY BIRTHDAY IN JUNE



Marge Bolding, Judy Harms,
Judy Hergert, Jane Kuhn,
Mary Redman

SAVE THE DATES

JUNE 2, 2010

Fond du Lac's buying trip

JUNE 8, 2010

Master Gardener Picnic – [sign up now](#)

JUNE 15 - 19, 2010

Master Food Preserver Training

JUNE 18 - 20, 2010

Midwest Renewal Energy Association

JUNE 19

Outagamie County Garden Tours

JUNE 21, 2010

Flower Arranging PV 1:30 p.m.

Watch the newsletter each month for more info on these events and more.

Plant of the Month: Little Henry Sweetspire

This award winning Dwarf Sweetspire is covered with arching chains of slightly fragrant, pure white flowers in late spring. The fall color is nothing less than spectacular. Fiery wine-red foliage rivals burning bush. This special native shrub is perfect for all uses, containers, borders and mass planting.



'Little Henry' Sweetspire is easy to grow, and adapts to most conditions. Feed once a year with a slow release fertilizer. He is a zone 5-9 plant. He grows to 2-3' in height and spread.

About Mayflowers

- Mayflower is a **belly** plant, i.e., one must lie on one's stomach to catch a legitimate moment of putting eye and nose to the beauty and perfume.
- The scarcely shrubby Mayflower is a tough, slightly woody, more or less rough-hairy plant with light brown, creeping stems and alternate, olive-green leaves.
- The scientific name, *Epigaea repens*, coined by Linnaeus in 1753 from Greek and Latin, literally means **creeping (or running) on the earth**.
- Mayflower typically grows in sandy or rocky, acid soils in woods and clearings, often on hillsides and banks, including road banks, especially under oaks and pines or hemlocks with such other ericads as mountain-laurel.
- Other common names of Mayflower are: *Gravel plant, shadflower, ground laurel, mountain pink, winter pink*.
- Mayflower plant leaves are alternate, evergreen, leathery, Ovate or oblong, with entire margin and a rounded or heart-shaped base.
- The Mayflower has a small **fleshy fruit**, 5-chambered, many-seeded capsule that splits open at maturity. Ants then disperse the seeds.
- Mayflower blooms from **March to May**.
- It has been the State Flower of Massachusetts since May 1, 1918 and the Provincial flower of Nova Scotia since 1901. Unfortunately, since 1925 Mayflowers have been on the endangered list.

Community Event

Outagamie County Master Gardeners Association
June 19, 2010

The Outagamie County Master Gardeners Association will be hosting their 2nd Annual "Garden Discoveries: an Educational Garden Tour" on Saturday, June 19. The public is invited to tour six select gardens in the Fox Cities. Each garden offers a unique horticultural lesson and all are truly great examples of sound gardening principals and beauty.

For a \$5 entry fee (to further develop the Community Garden Project) and two items of non-perishable food (to be donated to local food pantries), guests will experience beautiful area gardens with an opportunity to learn horticultural lessons during each visit.

For more information contact:

Tom Brinkman

920.729.9404

tbrinkman3@new.rr.com

Kathy Baum - 920.731.9385

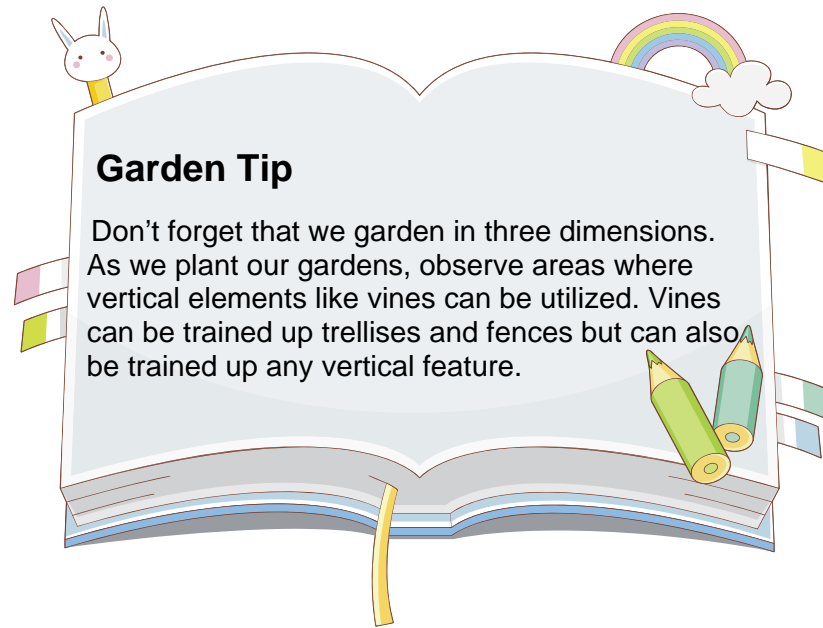
katbaum2003@yahoo.com

What Am I?

I am a hardy, long-lived perennial blooming from spring to early summer and requiring a minimum of maintenance. My orchid-like flowers are composed of six perianth segments: three outer sepals called "falls" which alternate with three inner petals, called "standards." A fuzzy line runs down the middle of each fall. Nine to 12 buds are usually found growing on short side branches on each of my stems. My standards and falls may be of the same color or standards may be of one color and falls a different color. My main colors are lavender, blue, white, purple, rose-red, yellow, pink, brown or various combinations and blends of these colors. My flowers are pleasantly fragrant and my stem may stand up to three feet tall.

I grow from an underground structure called a rhizome, a fleshy stem from which extend the true, stringy roots. These rhizomes branch and in time overgrow and crowd each other so that it is necessary to dig and divide every three to four years. The two main requirements for my successful growth are full sun and good drainage. I grow well in almost any good garden soil but am less susceptible to disease, such as root rot, in

soils of only moderate fertility. Free air movement around my plants is the best insurance against foliage diseases. I am excellent for planting in borders, beds and foundation plantings.



Garden Tip

Don't forget that we garden in three dimensions. As we plant our gardens, observe areas where vertical elements like vines can be utilized. Vines can be trained up trellises and fences but can also be trained up any vertical feature.

Garlic Mustard Report

By Lawanda Jungwirth

When I first surveyed the garlic mustard on the Wiouwash Trail on April 19 I was very discouraged. There seemed to be so much of it! I realized though, that the winter had been easy and warm weather had come very early, so the plants were about three weeks ahead in development as compared to other years. So even though it looked like there was a lot more garlic mustard than usual, the size of the plants was confusing my perception.

Though we had pretty much cleared the entire trail of adult plants in 2009, because of time constraints - the appearance of poison ivy - we were forced to leave a lot of first year seedlings, and these are the plants that I was seeing as adult plants that needed to be pulled this year.

Even on April 19, some of the plants were near flowering stage and I knew that we could not wait until May 1, the scheduled work date, to begin pulling, so we had impromptu work dates on several weekdays in the two weeks prior to the big pull.

Nineteen volunteers showed up on May 1 and a total of 26 people helped overall. On May 3, a group of seven finished up and did a little re-checking of already completed spots. Some of the less squeamish people also spent some time knocking tent caterpillars out of trees.

A check of the area on May 5 found several plants that we had missed, scattered here and there, including one big spot entirely overlooked! And all by itself, the king of all garlic mustard plants, about four feet high and as big as a shrub, hiding under the low branches of a honeysuckle. Good thing that one was found - the seeds from it could have repopulated the entire area all by itself!

A final (?) check of the entire area on May 8 turned up a few additional plants in each of the marked spots. Please note that the fact that these later plants were found in no way reflects on the quality of the job done by the earlier pullers - this plant is tricky and knows how to hide!

One new thing we noted this year was that something had been eating the tops of the plants. At first, you might think this would be a good thing - something eating garlic mustard - but what happened is that when the tops of the plants were eaten, the plant retaliated by putting out more and stronger stems and seemingly becoming more brittle, so that the roots broke off at ground level instead of pulling out of the ground easily.

We were able to take the time this year to remove many more first year seedlings than we were last year, so (always the optimist!) next year's job should be easier.

Thank you so much to the following Master Gardeners who pulled garlic mustard this year: Dorothy Bonnin, Linda Christenson, Jane Cross, Ralph Giessen, Sandy Giessen, Becky Gratz, Lawanda Jungwirth, Andy Krueger, Betty Kuen, Linda Petek, Ivan Placko, Mary Rebman and Marty Sacksteder.

Thank you also to others who helped: Brittany Breister, Aspen Gereau, Renee Gratz, Ron Jungwirth, Donna Krueger, Jane Krueger, Sydney Krueger, Mckenzie Noll, Zach Noll, John Petek, Faith Vanoss, Dale Winkler and Mary Winkler.

I estimate that we spent a total of 113 man-hours pulling garlic mustard in 2010.

A NEW ADVENTURE WITH FUN IN LEARNING

The Education Committee will be offering a car pool trip to tour some CSA farms. For those of us that are not familiar with CSA, it stands for Community Supported Agriculture.

CSA members agree to financially support an environmentally responsible farm and farmer by paying upfront costs before the growing season begins to be able to share in the bounty of the as

well as the risk of the harvest. As we all are aware sometimes a growing season is not ideal and share will be lower or it could be a great season with a bumper crop giving everyone a larger share.

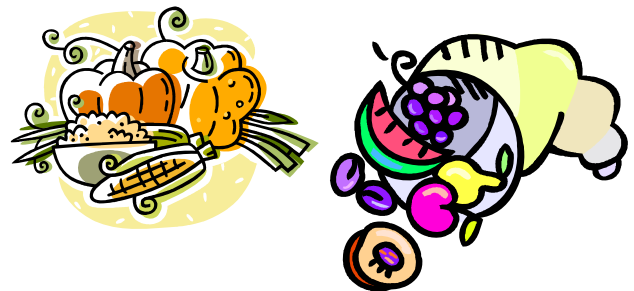
Your share maybe picked up day of harvest at a pick up point, you maybe able to pick your own, or receive your harvest share in an agreed upon manner.

CSA tends to focus on produce, but your share may include milk, eggs, meat, poultry, fruit, honey or even baked goods. Some of which may be had for an extra fee. It is a super way to make Farmers Market up close and personal.

If you are interested the tour will be Saturday June 12, 2012. It will be a car pool leaving from Oshkosh Penny's parking lot at 7:30 a.m. You will tour two CSA's and a bee yard in the Plymouth and Chilton area. On this tour you may be able to purchase fresh strawberries and ice cream and/or lunch. A contribution for gas will also be collected.

Please contact Audrey Ruedinger to register for this trip at 231-5745 or email Audrey at aruedinger2@new.rr.com

If you would like **more information** concerning CSA, you may call Linda Tobey at 734-2264 or email her at linda@americanpresstech.com. I have information to mail or email you. It is two pages of information thus a little large for the newsletter, but don't hesitate to ask for it. It is very informative reading.



MG of the Month:

Sorry, but we have run out of members' bios. If you would like us to renew the Member of the month, please send in a bio if you have not already done so. Send it to Linda Tobey 1800 Midway Rd, Menasha, WI 54052 or email to linda@americanpresstech.com

Answer to “What Am I?”

I am an iris. Family: Iridaceae. Genus: Iris.
Common names: bearded iris, German iris, iris germanica, common flag. Iris is a genus of 260 species of flowering plants with showy flowers. It takes its name from the Greek word for rainbow, referring to the wide variety of flower colors. It should be of no surprise that the kings of France selected the bearded iris as their emblem, the fleur-de-lis.



MEMBER’S BOOKLET ERROR

Audrey Ruedinger’s email address is wrong. It should be aruedinger2@new.rr.com

Report from our Facebook Page

By Lawanda Jungwirth

As of May 20, our Winnebago County Master Gardener Facebook page has 66 fans. Most of them are not Master Gardeners!

So far, we've had five questions on our Discussion Board. The topics include keeping rabbits out of the garden, native plants, black spots on rudbeckia, plants for sunny spots and compost. *Remember that any time you spend researching and answering a question asked by someone on our Facebook site counts as volunteer hours.*

On our Facebook page, there are handy links to the state MG association, our local association, my website that archives the articles I've written for the Oshkosh Northwestern, Diggers Hotline and local weather.

If you are already on Facebook, search for Winnebago County Master Gardeners to find our page. If you haven't joined Facebook and have questions about how to do so, please contact Stacy Voight at stacyellen@charter.net.

Join us today!

Park View Health Center June 8th 6:00 PM

MASTER GARDENER BUSINESS MEETING

May 11, 2010

COUGHLIN CENTER, 6:15 PM

Members Present:

Kathy Daniels, Mary Wiedenmeier, Dorothy Bonnin, Linda Loker, Ken Hawk, Stanley Meyer, Patty Schmitz, Synda Jones, Stacy Voight, Betty Kuen, Bob Potter, Bob Kosanke, Arlene Kosanke, David Leonard, Cindy Meszaros, Joni Pagel, Dorothy Gayhart-Kunz, Janet Priebe, Ruth Freye, Jane Kuhn, Diana Dougherty, Jerry Robak, Marge Bolding, Sue Egner, Lawanda Jungwirth, Ivan Placko, Karen Frittitta, Debbie Quandt, Becky Gratz, Linda Petek, Betty Hoytink, Linda Baeten, Teresa Walotka, Dara Sitter, Anne Murphy, Pat Behm, Marty Sacksteder, Vicki Christman, Audrey Ruedinger, Linda Christensen, Karen Wedde

Announcements:

A Facebook presentation was given tonight by Stacy Voight. A handout was available. She showed us how to set up a Facebook account and access the MG Facebook page. She showed us the various privacy settings. So far 58 people have joined the MG Facebook page. Thank you Stacy!

Treasurer’s Report – Alice Graf

The balance as of 4/30/2010 is:

Cash On Hand	\$ 100.00
Checking	\$ 11,722.72
CD Renewal 2/22/10	\$ 5,081.29
Total all Accounts 3/31/10	\$ 16,904.06

A handout was available with the details.

Secretary’s Report:

The minutes for April were posted in the May Newsletter. There were no corrections or additions.

OLD BUSINESS –

Taking Root – Linda Baeten

Linda had sent Alice the donation form for the Oshkosh Area Community Foundation and a MG check requisition form to make the \$1,500 donation to Taking Root. She sent the Project Approval Request form to Ivan for the Taking Root project. Linda has been in touch with Bill Sturm, Oshkosh City Forester, by phone and has been in contact with the MGs on the Taking Root Committee regarding a planting time and site. We are scheduled to plant the flower bed at the corner of Merritt and Hazel in the third or fourth week of May. Linda will keep the committee informed as to the exact time and date.

NEW BUSINESS –

Winneconne Beautification Association

Kathy was approached by the Association to help plant and maintain two flower beds in Winneconne. They have 17 beds on Main Street, but are asking for help with 2. Kathy contacted MGs from the Winneconne area to see if they might be interested. Betty Hoitink and Marti Norton were happy to take on the project. Ralph and Sandy Giessen will help. The Beautification Association will provide mulch and we will provide the plants and water.

New Officers – Mary Wiedenmeier. Mary encouraged members to think about stepping up and running for an office on the Board. Elections are coming up in November for the offices of Vice President, Secretary (2 year term) and one Board Member (3 year term). It is a great way to get hours!

COMMITTEE REPORTS

Education -

- Audrey reported on the Wildflower Walk that took place May 1st. Not many turned out for the event, but 49 species of wildflowers were identified. In addition they found morel mushrooms and bubbling springs, even some invasives. It was a great trip. Thanks to Karen Wedde for arranging!
- Karen Wedde informed us of a trip to 2 CSA Farms and a Bee yard on June 12th in the Plymouth area. Handouts were available and a sign-up sheet was passed around. Plan on car pooling and stopping at the Field to Fork restaurant in Sheboygan.
- Picnic – June 8th
- Garden walk at Linda Baeten's, 1112 Merritt Ave, Oshkosh, on July 13th.
- Ball Horticulture Gardens trip to Illinois, August 6th.

Invasive Species - Lawanda

The Garden Mustard project is complete for this year. 26 people helped for a total of 113 hours. There is now less garlic mustard growing on the WIOUWASH Trail thanks to the help of the MGs. There was a question as to whether a weed whacker would take care of the mustard as it is a biennial. Lawanda thought it would come back with even more flowers if it was merely cut down. It needs to be pulled. Look for garlic mustard recipes on the internet, but use the young spring leaves for best flavor.

Note: Audrey and Lawanda were recognized by the Wisconsin Council of Invasive Species and nominated for Crusader of 2010. They are invited to the State Capitol on June 2nd for recognition in the Governor's Conference Room. Congratulations Audrey and Lawanda!

Community Gardens – Nick Schneider

There are still 17 plots available at the Oshkosh community gardens. If you know of anyone interested have them contact the Extension office. Whatever plots are left will be planted and the produce shared.

Fall Classes – Nick Schneider

Fall MG classes for Basic Training start September 7th and end by Thanksgiving. A flyer will be created to distribute at the Farmer's Market, on Facebook and on the Website. Nick was planning on a short MG Business meeting prior to the start of the first class.

State Convention –

The State MG Convention is in Sheboygan this year on July 23 and 24. There will be a garden tour on Friday to the Christopher Farm and Gardens. See the State website for a registration form and more information. The cost is \$79 before June 15th. The Garden tour is \$30.

Annual Picnic – June 8th

The picnic will be held at the Park View Gazebo. There will be a plant swap. Please label any plants you bring. It's OK to bring more than one plant. Bring a dish to pass. Grilled chicken breast and hamburgers will be provided as well as plates, napkins drinks, and utensils. A sign-up sheet was available.

Paine Art & Gardens Festival of Spring – May 22

– Ken Hawk

We have enough volunteers for our booth. The Oshkosh Garden Club will also be doing their plant sale on the adjacent Museum grounds.

Other New Business

Lawanda had information on a job opportunity for a gardener. They are willing to pay \$25/hour to plant the garden and then come back three weeks later to maintain. See Lawanda for more information.

Door Prizes were handed out, and meeting adjourned 7:30 pm

No Business Meetings in June, July or August – Stay tuned for Garden Walks and Trips.

Respectfully submitted,
Linda Baeten, Secretary

Outagamie County educational garden tours Saturday June 19

The Outagamie County Master Gardeners is offering a day of educational tours through six select gardens in the Fox Cities. Each plot is tended with sound gardening principles, offering unique horticultural lessons.

For an entry fee of \$5.00 and two items of non-perishable food the gates to six wonderful gardens will be open to you. You may begin your tour and pay your admittance at any of the participating gardens. They include:

The Uhlenbrauck Garden:

Welcomed by a picket fence in the front yard you are surrounded by color, scents and textures. 1825 S. Lawe St., Appleton

The Thompaon Garden:

All but hiding the front porch, hardy native and butterfly and bird friendly plants sway playfully in the breeze beckoning the visitor to follow them through the yard. 1525 N. Clark St., Appleton

Einstein Middle School:

Hidden in plain sight, this public-space gem is proof that it is tough to be "smarter than a school kid" 324 E. Florida, Appleton

The Beard / Rusch Garden:

Make sure you bring a note pad and pen! Created over the past five years this functional yet stunning landscape is laden with ideas to take home. N1188 Red Wing Dr., Greenville

The Community Gardens:

This is the original Appleton area Community Garden Program site. GV/Casaloma Dr., Grand Chute

The Murdzek Garden:

This is an awe inspiring transformed four acre alfalfa field with super-sized perennials and shrubs, not to mention the envy forming vegetable garden and more.

N3078 Greenwood Rd., Appleton

Tickets will be sold and food items collected the day of the event at any of the gardens.

Just one entry fee for all five gardens

Spend your gardening time and money wisely

George Washington said "Bad seed is robbery of the worst kind, for your pocket-book not only suffers by it, but your preparations are lost and a season passes away unimproved." He makes a good point. Often you'll find that those ten-packs-for-a-dollar seeds don't germinate very well and there usually aren't many seeds in them. You'll end up buying new, better quality seed if it isn't too late in the season by the time you figure out your mistake, or else just giving up on the project. I'd hate to think that someone thought they lacked a green thumb because they made the mistake of buying bad seed.

The same premise holds true when you buy gardening tools. Buy the best quality tools you can afford or you'll be replacing them every year. A dollar store trowel will soon bend and you'll be back at the store for another. If you've got clay soil, a cheap digging fork will look like a whirligig after a few uses. An even better idea than purchasing new high quality tools is to shop at yard and estate sales. The older tools are the strongest and best.

Another way that money and time is wasted in the garden is when the gardener is gung-ho in the spring and plants a huge vegetable garden or installs a big flowerbed full of plants that are going to need a lot of maintenance over the growing season. Then life interferes, the garden chores fall to the wayside, and weeds overtake. Soon the weeds are so prevalent that just thinking about beginning to clear them out is overwhelming.

Avoid this mess by making a commitment at the start of the season to see your plans through. Be realistic. You know how much time your other obligations take, and whether or not you can count on family members to help out in the garden. Scale plans back at the start and you'll be much happier with the entire project. You can always add on later in the season or next year if you find that you have extra time to devote to the garden.

If we don't get sufficient rainfall, your garden is going to need supplemental water. Unless you've installed an irrigation system, this will also take some of your time. Don't waste money on beautiful plants that you then allow to die for lack of water. Even worse is buying too many plants and never getting them in the ground!

OSHKOSH SATURDAY FARMERS MARKET-2010 Starts June 5

PLEASE BRING YOUR OWN CHAIR

We have 23 members who have signed up to work at the Farmers Market. Schedules were sent out on May 22. Your name is highlighted but please check the list to see when you should come. If you can't make it just email or call Janet or Dorothy. Hours are: set-up at 7:30 AM, we open at 8:00 AM, take down at 12:30 PM.

Dress for the weather. Restrooms are in the city police building and location of the market is the city hall parking lot. We're located at the end of the east row near the city hall door. Park on the outside of the market in a stall.

Be prepared for all kinds of weather, lots of questions, and lots of chatting—a good way to meet MG members. You can tour the market too.

At this time we have one opening on July 3. If you need hours, just show up anytime. We're flexible. One more is always welcome.

See you there,
Dorothy Kunz and Janet Priebe

Perhaps the worst waste of resources is the unharvested vegetable garden. You've worked all season, weeding, watering, mulching, monitoring for pests, and then you're going to let it all rot? If you've lost your ambition at the end of the season and just can't can, freeze, or dehydrate any more produce, please donate it to a local food pantry. For most of the year, food pantries distribute only non-perishable food items and their patrons are very happy to get fresh produce for the short time it is available in Wisconsin.

Organic Gardening Tip of the Month

From Lawanda Jungwirth

Lilacs need be fertilized only every two years. Use compost or another fertilizer that slowly releases nitrogen. Lilacs will look best if you spray them with a mixture of dilute liquid fertilizer and dilute seaweed extract once a month for the first three months after the last frost. Do not feed them for the two months prior to the first frost in the fall, so that they have time to harden off for winter.

If you notice a thin, dusty white growth on the leaves, this is powdery mildew fungus. It does little damage other than cause the plant to look unattractive and leaves may fall prematurely. Spray the shrub thoroughly with a solution of 1/2 teaspoon baking soda and a squirt of mild dish soap in a quart of water once or twice a week until the problem disappears. Once or twice is probably all it will take. In fall, collect and destroy all plant material on the ground under your lilacs.



Reminder!

Sign up for the picnic now. It will be June 8 at the Park View Pavilion. Everyone is welcome. Bring your family if you can. MG's will provide meat and drinks. You should bring a lawn chair and a dish to pass along with the desire to eat well, win prizes, chat with friends - in short

HAVE A GOOD TIME



SANCTIONED CORE PROJECTS

Community Education	
Marge Menacher	223-3467
Community Gardens	
Ruth Freye	734-5978
Education and Control of Invasive Species	
Lawanda Jungwirth	836-2878
Audrey Ruedinger	231-5745
Farmers Market	
Dorothy Gayhart Kunz	233-8468
Janet Priebe	233-1898
Humane Society Memorial Garden	
Dara Sitter	582-4405
Lincoln School	
Karen Wedde	231-9696
Mary Haave	231-2542
Octagon House	
Jerry Robak	722-3311
Paine Gardens	
Bob Potter	233-3349
Park View Cutting Garden	
Bill Weber	231-2936
Park View Vegetable Garden	
Judy & Al Harms	688-5523
Park View Prairie Garden	
Ken Hawk	426-1691
Park View Flower Arranging	
Pat Behm	410-3290
Plant Health Advisors @ UWEX	
Barbara Kuhn	426-2920
Rushford Town hall	
Audrey Ruedinger	231-5745
Carol Dorsch	589-5936
Shared Harvest	
Ken Friedman	235-6766
Fox Cities Habitat for Humanity	
David Leonard	379-5860
Washington & Webster Schools	
Marge Menacher	223-3467

OFFICERS / BOARD MEMBERS

Mary Wiedenmeier (PRES)	426-0991
Kathy Daniels (PRES)	233-0410
Ivan Placko (VP)	721-9394
Linda Baeten (SEC)	232-1224
Alice Graf (TRES)	203-8252

BOARD MEMBERS

Susan Bohn	685-0427
Marge Menacher	233-3467
Stanley Meyer	725-6486
Ken Hawk	426-1691
Audrey Ruedinger	231-5745
Roy Anne Moulton	886-1283
Bob Potter	233-3349

COMMITTEES

Education and Trips	
Roy Anne Moulton	886-1283
Education – Meetings	
Audrey Ruedinger	231-5745
Event Planning	
Kathy Daniels	233-0410
Mary Wiedenmeier	426-0991
Historian	
Dawn Kent	410-8866
Membership	
Dawn Kent	410-8866
Newsletter	
Linda Tobey	734-2264
Jean Reed	729-9012
Lawanda Jungwirth	836-2878
Jane Kuhn	231-3993
Refreshment Committee	
Linda Loker	426-1435
State Rep	
Bob Kosanke	231-1873
SOP & Bylaw Committee	
Stan Meyer	725-6486
Sunshine	
Liz Ginke	722-8140
Hours	
Bruce Abraham	231-3747
Linda Tobey	734-2264
Home & Garden Shows	
Joni Pagel	233-6619
Cindy Meszaros	233-3550
Website, Computer and Projector	
Jean Reed	729-9012

June 1 - Board Meeting – 6:00PM
June 8 – Picnic @ 6:00 P.M.
NO BUSINESS MEETING IN JUNE, JULY OR
AUGUST

OUR MISSION STATEMENT:

Our purpose is to provide horticultural education, community service & environmental stewardship for our Community in affiliation with the University of Wisconsin Extension Program.



NAME :

WCMG 2010 HOURS REPORT

Must be received by September 1, 2010

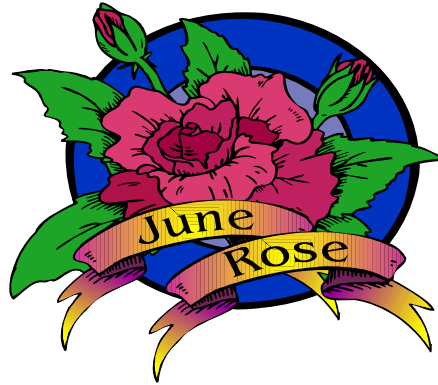
ADDRESS :

PHONE :

	ONLY FILL IN APPROPRIATE BLANKS WITH INFORMATION												DO NOT USED GRAYED AREA				
	AUG	SEPT	OCT	NOV	DEC	JAN	FEB	MAR	APR	MAY	JUN	JUL	AUG	SERVICES	COMMUNITY EDU.	YOUTH	TOTALS
2009 - 2010																	
SERVICES																	
ATTEND MEETINGS																	
OFFICER / BOARD																	
COMMUNITY GARDEN																	
EDU/CONTROL INVASIVES																	
LINCOLN SCHOOL																	
OCTAGON HOUSE																	
OSHKOSH HUMANE SOCIETY																	
PAINE GARDENS																	
PARK VIEW PROJECTS																	
PLANT HEALTH ADVISOR																	
RUSHFORD																	
SHARED HARVEST																	
SET UP CLASS																	
APPROVED INDIVIDUAL																	
ANY OTHER PROJECTS																	
COMMITTEES																	
TRIPS / HOURS																	
SUNSHINE COMMITTEE																	
REFRESHMENTS																	
SOCIALS																	
HISTORIAN/STATE REP																	
ANY OTHER SERVICE																	
COMMUNITY EDU.																	
EDU. COMMITTEE																	
FARMERS MARKET																	
FOX CITIES HAB/HUMANITY																	
WORKED SHOWS																	
GAVE PRESENTATION																	
NEWSLETTER																	
ANY OTHER COMM. ED.																	
YOUTH																	
WASHINGTON/WEBSTER																	
ANY OTHER WITH YOUTH																	
CONTINUING EDU.																	
CLASSES																	
GUIDED GARDEN TOUR																	
WORK SHOP/SEMINARS																	
HORT. TV / VIDEOS																	
CONTINUING EDUCATION HOURS DO NOT GET ADDED WITH TOTAL HOURS																	
TOTAL OF VOLUNTEER HOURS ONLY																	
TOTAL CONTINUING EDUCATION ONLY																	

EMAIL: wiscorpio53@yahoo.com
 (Please include in e-mail Subject line: "WCMG 2010 Hours Form")

or Mail To: Bruce Abraham
 1911 Amy Jo Dr
 Oshkosh, WI 54904-8841



2010

Flowers are our greatest silent Friends

Jim G. Brown

SUN	MON	TUE	WED	THUR	FRI	SAT
		1 BOARD MEETING	2	3	4	5 Oshkosh Farmers Market 7:30 a.m. Setup 8 a.m.-12:30 p.m.
6	7	8 PICNIC	9	10	11	12 Oshkosh Farmers Market 7:30 a.m. Setup 8 a.m.-12:30 p.m.
13	14	15 Master Food Preserver Training 15-19	16	17	18 Midwest Renewal Energy 18-20	19 Outagamie Garden Walks Oshkosh Farmers Market 7:30 a.m. Setup 8 a.m.-12:30 p.m.
20	21 Flower Arranging 	22	23	24	25	26 Oshkosh Farmers Market 7:30 a.m. Setup 8 a.m.-12:30 p.m.
27	28	29	30			

An EEO/Affirmative Action employer, University of Wisconsin Extension provides equal opportunities in employment and programming including Title IX requirements. Please make request for reasonable accommodations to ensure equal access to educational programs as early as possible preceding the scheduled program, service or activity.

